

RETROFIT LED LEONARDO 1K



DATASHEET

DeSisti

RETROFIT LED LEONARDO 1K

LED RETROFIT KIT 110W - CRI>96 for De Sisti Tungsten Leonardo 1 kW

White light, either Tungsten or Daylight balanced CCT

OVERVIEW

The LED RETROFIT KIT for the DE SISTI TUNGSTEN FRESNEL LEONARDO 1kW allows to transform your old unit in a high efficiency Fresnel lens spotlight using the innovative High Power 110W COB (Chip on Board) LED ARRAY, in combination with the DE SISTI Internationally Patented optical system for LED FRESNEL and with an enhanced CRI (Color Rendering Index) higher than 96 for appropriate chromacity performances.

The Lighting Fixture is DMX Controlled from 0 to 100% with a super smooth Dimming and a negligible variation of Colour Temperature while controlling the Light intensity.

The KIT is available with either Tungsten (3.200°K) or Daylight (5.600°K) Balanced CCT (Correlated Color Temperature), in both cases with a CRI higher than 96 and works with Manual and Pole operated versions.

The lighting Performances of the Tungsten Balanced CCT from medium to full flood match with those of a 1000W tungsten Fresnels, while the Daylight Balanced CCT convert your fixture in a LED Fresnel similar to a 350W HMI.

The fixture combines the classical SPOT/FLOOD beam control on an equivalent FOCUS RANGE to a conventional lamp fresnel, with an excellent barn door cutting.

It allows to continue to utilize the Standard accessories from the DE SISTI range of equivalent Fresnel Lens size, such as Barndoor, Color Frame, Cones, Scrims.



WHAT'S INSIDE

FIXTURE ENGINE

POWERCON IN & OUT PANEL CONNECTORS.
XLR 5 Pin DMX IN & OUT PANEL CONNECTORS.
110W high power CRI>96
Built In Universal Power Supply 90-250V
50/60Hz DMX controlled.

CABLES

Mod. 5403.135 3 mt. (9.8 ft) detachable Blue
POWERCON power cable with bare ends.
DMX cable is not included, to be ordered
separately

MODEL	DESCRIPTION
F6T320RF	RETROFIT KIT for De Sisti Tungsten Leonardo 1 kW - Tungsten CCT
F6D320RF	RETROFIT KIT for De Sisti Tungsten Leonardo 1 kW - Daylight CCT

RETROFIT LED LEONARDO 1K

FEATURES

Power to LED	110W - DC current to the LED - flicker free
Rated Voltage & PFC	90-250V 50-60Hz PFC 0,96
Power consumption	150W @ 230V 200W @120V
Power Connection	powerCON IN & OUT
DMX Data link USITT DMX512-A	5-pin XLR for DMX in & out. Use shielded data cables. Do not overload the daisy chain. Up to a maximum of 32 devices can be used on a single DMX chain.
DMX Channels	1 @ 8bit 2 @ 16bit
LED ARRAY Lifetime	55.000 hours with 90% Lumen Maintenance. The LED ARRAYS are tested and certified up to LM80
CCT	T: 3.200°K D: 5.600°K
CRI / TLCI	T: 97 / 96 D: 96 / 97
Max. Housing Surface Temperature	70° C
Weight of Fixture	5,0 Kg (11.0 lb)
Suited for Lens diameter	150mm / 6"

FEATURES

High efficiency Self Stabilizing Active Cooling: automatic, thermal stabilization of the LED operating temperature is managed by an internal thermal sensor and CPU, variable speed fan and heat sink to maintain the LED Array's constant temperature at a maximum of 65°C. The hydro dynamic bearing fan operates silently with a very low RPM.

Special Patented Optics for LED Technology.

Helix Screw driven focus mechanism which guides Teflon bushings supported LED ENGINE along 2 rods. This ensures smooth operation during focusing in any tilting position of the fixture. The Teflon bushings also provide a wiping action, which cleans the steel guide rails during focus.

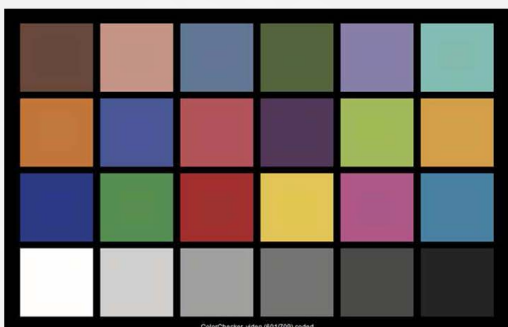
RETROFIT LED LEONARDO 1K

TLCI

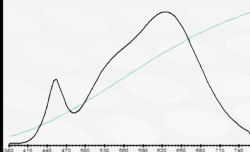
TUNGSTEN CCT

De Sisti LED RETROFIT KIT for LEONARDO 1 kW - 110W - Tungsten : CCT = P3065 (+0.4)
TLCI-2012: 96 (P3065)

Television Lighting Consistency Index-2012



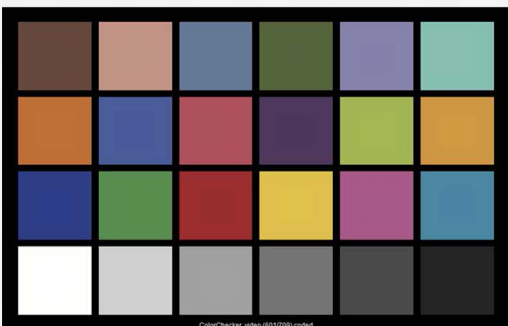
Sector	Lightness	Chroma	Hue
R	0	0	0
RY	0	-	--
Y	0	-	-
YIG	0	-	0
G	0	0	+
G/C	0	0	+
C	0	0	+
C/B	+	0	-
B	0	-	-
BM	0	0	++
M	+	0	++
M/R	+	0	++



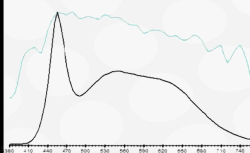
DAYLIGHT CCT

De Sisti LED RETROFIT KIT for LEONARDO 1 kW - 110W - Daylight : CCT = D5850 (+1.2)
TLCI-2012: 97 (D5850)

Television Lighting Consistency Index-2012



Sector	Lightness	Chroma	Hue
R	0	0	0
RY	0	0	--
Y	0	-	-
YIG	0	0	0
G	0	0	0
G/C	0	0	0
C	+	0	-
C/B	+	-	--
B	0	-	-
BM	0	0	+
M	0	0	+
M/R	+	0	0



PHOTOMETRICS

// LED RETROFIT KIT FOR DE SISTI TUNGSTEN FRESNEL LEONARDO 1kW

Central Light intensity (Candle Power)

Illumination center values at Distances

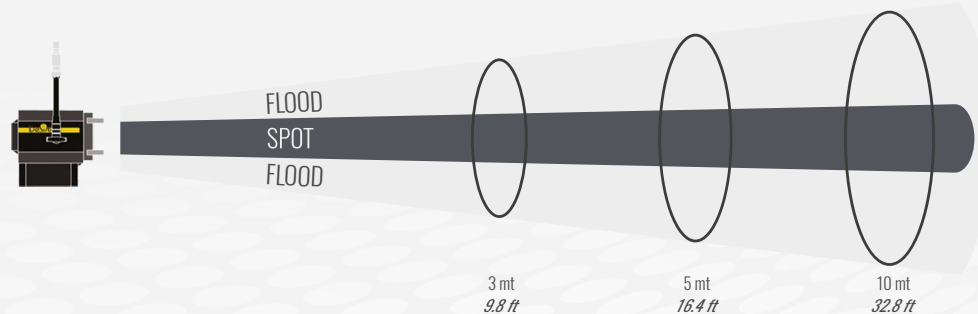
3.200°K TUNGSTEN BALANCED C.C.T. (Correlated Color Temperature) - 110W (CRI 97) - TLCI: 96

	Central Light intensity (Candle Power)	3m	5m	10m
FLOOD	11.691 cd	1.299 lux <i>121 FC</i>	468 lux <i>43 FC</i>	117 lux <i>11 FC</i>
SPOT	43.146 cd	4.794 lux <i>445 FC</i>	1.726 lux <i>160 FC</i>	431 lux <i>40 FC</i>

5.600°K DAYLIGHT BALANCED C.C.T. (Correlated Color Temperature) - 110W (CRI 96) - TLCI: 97

	Central Light intensity (Candle Power)	3m	5m	10m
FLOOD	13.311 cd	1.479 lux <i>137 FC</i>	532 lux <i>49 FC</i>	133 lux <i>12 FC</i>
SPOT	50.850 cd	5.650 lux <i>525 FC</i>	2.034 lux <i>189 FC</i>	509 lux <i>47 FC</i>

3 mt 9.8 ft 5 mt 16.4 ft 10 mt 32.8 ft



Light beam diameter with Beam Angle (50% of center value)

	Beam Angle (50%)	3m	5m	10m
FLOOD	53°	2,99 mt <i>9.8 ft</i>	4,99 mt <i>16.4 ft</i>	9,97 mt <i>32.7 ft</i>
SPOT	13°	0,68 mt <i>2.2 ft</i>	1,14 mt <i>3.7 ft</i>	2,28 mt <i>7.5 ft</i>

Light beam diameter with Field Angle (10% of center value)

	Field Angle (10%)	3m	5m	10m
FLOOD	69°	4,12 mt <i>13.5 ft</i>	6,87 mt <i>22.5 ft</i>	13,75 mt <i>45.1 ft</i>
SPOT	22°	1,17 mt <i>3.8 ft</i>	1,94 mt <i>6.4 ft</i>	3,89 mt <i>12.8 ft</i>

LUX AT ANY DISTANCE = Candle Power: [Distance(in m.)]²

FC. AT ANY DISTANCE = Candle Power: [Distance(in ft)]²

The company reserves the right to alter the declared data without prior notice

