

RETROFIT VW **LED** LEONARDO 1K



DATASHEET

DeSisti

RETROFIT VW LED LEONARDO 1K

LED VW RETROFIT KIT 110W - CRI>96 for De Sisti Tungsten Leonardo 1 kW
White light, with Tunable Correlated Color Temperature from 2.800 to 6.600°K

OVERVIEW

The Vari-White RETROFIT KIT FOR LEO 1K maintains the high efficiency DE SISTI Internationally Patented optical system for LED FRESNEL while the innovative white phosphors LED ARRAY provides the ability to tune the Correlated Color Temperature from a minimum of 2.800°K to a maximum of 6.600°K with an enhanced CRI (Color Rendering Index) higher than 95 at any CCT within the range.

The Lighting Fixture is DMX Controlled for:

- 0 to 100% with a super smooth Dimming
- STEP MODE for CCT Control: Increments of 400°K every 10% of DMX variation
- CONTINUOUS MODE for CCT control.

The fixture combines the classical SPOT/FLOOD beam control on an equivalent FOCUS RANGE to a conventional lamp fresnel, with an excellent barn door cutting.

It utilizes Standard accessories from the DE SISTI range of equivalent Fresnel Lens size, such as Barndoor, Color Frame, Cones, Scrim.



WHAT'S INSIDE

FIXTURE ENGINE

POWERCON IN & OUT PANEL CONNECTORS.
XLR 5 Pin DMX IN & OUT PANEL CONNECTORS.
110W high output CRI>95 LED with Tunable
CCT from 2.800°K till 6.600 °K

Built In Universal Power Supply 90-250V
50/60Hz DMX controlled.

CABLES

Mod. 5403.135 3 mt. (9.8 ft) detachable Blue
POWERCON power cable with bare ends.

DMX cable is not included, to be ordered
separately

MODEL	DESCRIPTION
F6VW310RF	RETROFIT KIT for De Sisti Tungsten Leonardo 1 kW - Tunable CCT - 2800K to 6600K

RETROFIT VW LED LEONARDO 1K

FEATURES

Power to LED	110W - flicker free
Rated Voltage & PFC	90-250V 50-60Hz PFC 0,96
Power consumption	150W @ 230V 150W @120V
Power Connection	powerCON IN & OUT
DMX Data link USITT DMX512-A	5-pin XLR for DMX in & out. Use shielded data cables. Do not overload the daisy chain. Up to a maximum of 32 devices can be used on a single DMX chain.
DMX Channels	3: Dimmer/Light Intensity, CCT Control, Mode of CCT Control (steps or continuous)
LED ARRAY Lifetime	50.000 hours with 80% Lumen Maintenance. The LED ARRAYS are tested and certified up to LM80
CCT	Tunable from 2.800°K to 6.600°K
CRI / TLCI	CRI>95 TLCI:96
Max. Housing Surface Temperature	70° C
Weight of Fixture	5,0 Kg (11.0 lb)
Suited for Lens diameter	150mm / 6"

FEATURES

Vari-White CCT technology with a range from 2.800°K to 6.600°K

CRI Greater than 95 at any CCT within the range

High efficiency Self Stabilizing Active Cooling: automatic, thermal stabilization of the LED operating temperature is managed by an internal thermal sensor and CPU, variable speed fan and heat sink to maintain the LED Array's constant temperature at a maximum of 65°C. The hydro dynamic bearing fan operates silently with a very low RPM.

Special Patented Optics for LED Technology.

Helix Screw driven focus mechanism which guides Teflon bushings supported LED ENGINE along 2 rods. This ensures smooth operation during focusing in any tilting position of the fixture. The Teflon bushings also provide a wiping action, which cleans the steel guide rails during focus.

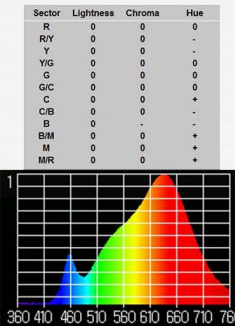
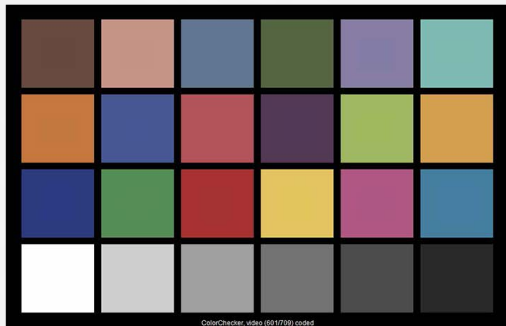
RETROFIT VW LED LEONARDO 1K

TLCI

@2800K CCT

DS VW LED RETROFIT KIT for LEONARDO 1kW - 110W - @2800°K : CCT = P2791 (+0.3)
TLCI-2012: 96 (P2791)

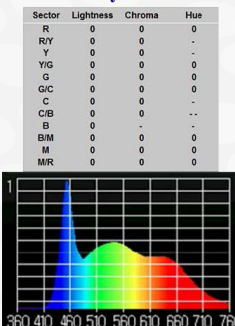
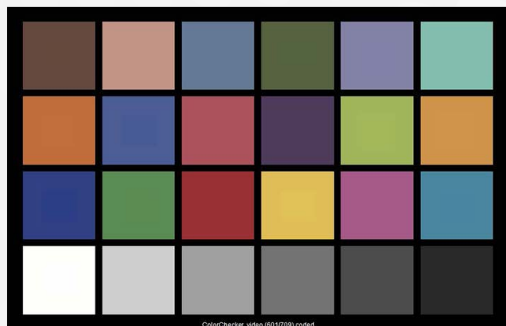
Television Lighting Consistency Index-2012



@6500K CCT

DS VW LED RETROFIT KIT for LEONARDO 1kW - 110W - @6600°K : CCT = D6990 (+0.4)
TLCI-2012: 96 (D6990)

Television Lighting Consistency Index-2012



PHOTOMETRICS

// Vari-White LED RETROFIT KIT FOR DS TUNGSTEN FRESNEL LEONARDO 1kW

Central Light intensity (Candle Power)

Illumination center values at Distances

FULL FLOOD - C.C.T. tunable from 2.800°K to 6.600°K - 110W (CRI >95) - TLCI: 96

FLOOD @ 2.800°K CCT	7.191 cd	799 lux 74 FC	288 lux 27 FC	72 lux 7 FC
---------------------	----------	------------------	------------------	----------------

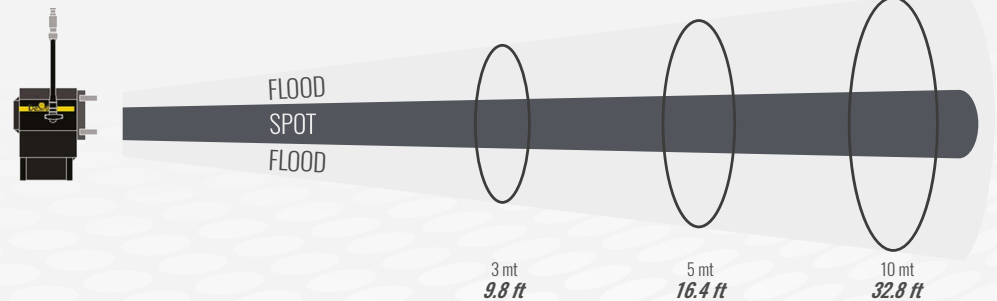
FLOOD @ 6.600°K CCT	9.524 cd	1.058 lux 98 FC	381 lux 35 FC	95 lux 9 FC
---------------------	----------	--------------------	------------------	----------------

FULL SPOT - C.C.T. tunable from 2.800°K to 6.600°K - 110W (CRI >95) - TLCI: 96

SPOT @ 2.800°K CCT	44.906 cd	4.990 lux 464 FC	1.796 lux 167 FC	449 lux 42 FC
--------------------	-----------	---------------------	---------------------	------------------

SPOT @ 6.600°K CCT	58.140 cd	6.460 lux 600 FC	2.326 lux 216 FC	581 lux 54 FC
--------------------	-----------	---------------------	---------------------	------------------

3 mt
9.8 ft 5 mt
16.4 ft 10 mt
32.8 ft



Light beam diameter with Beam Angle (50% of center value)

FLOOD	60°	3,46 mt 11.4 ft	5,77 mt 18.9 ft	11,55 mt 37.9 ft
-------	-----	--------------------	--------------------	---------------------

SPOT	12°	0,63 mt 2.1 ft	1,05 mt 3.4 ft	2,10 mt 6.9 ft
------	-----	-------------------	-------------------	-------------------

Light beam diameter with Field Angle (10% of center value)

FLOOD	76°	4,69 mt 15.4 ft	7,81 mt 25.6 ft	15,63 mt 51.3 ft
-------	-----	--------------------	--------------------	---------------------

SPOT	20°	1,06 mt 3.5 ft	1,76 mt 5.8 ft	3,53 mt 11.6 ft
------	-----	-------------------	-------------------	--------------------

LUX AT ANY DISTANCE = Candle Power: [Distance(in m.)]²

FC. AT ANY DISTANCE = Candle Power: [Distance(in ft)]²

The company reserves the right to alter the declared data without prior notice

