

RETROFIT VW LED LEONARDO 2K



DATASHEET

Desisti

RETROFIT VW LED LEONARDO 2K

LED VW RETROFIT KIT 165W - CRI>96 for De Sisti Tungsten Leonardo 2 kW

White light, with Tunable Correlated Color Temperature from 2.800 to 6.600°K

OVERVIEW

The Vari-White RETROFIT KIT FOR LEO 2K maintains the high efficiency DE SISTI Internationally Patented optical system for LED FRESNEL while the innovative white phosphors LED ARRAY provides the ability to tune the Correlated Color Temperature from a minimum of 2.800°K to a maximum of 6.600°K with an enhanced CRI (Color Rendering Index) higher than 95 at any CCT within the range.

The Lighting Fixture is DMX Controlled for:

- 0 to 100% with a super smooth Dimming
- STEP MODE for CCT Control: Increments of 400°K every 10% of DMX variation
- CONTINUOUS MODE for CCT control.

The fixture combines the classical SPOT/FLOOD beam control on an equivalent FOCUS RANGE to a conventional lamp fresnel, with an excellent barn door cutting.

It utilizes Standard accessories from the DE SISTI range of equivalent Fresnel Lens size, such as Barndoor, Color Frame, Cones, Scrim.



WHAT'S INSIDE

FIXTURE ENGINE

POWERCON IN & OUT PANEL CONNECTORS.
XLR 5 Pin DMX IN & OUT PANEL CONNECTORS.
165W high output CRI>95 LED with Tunable
CCT from 2.800°K till 6.600 °K

Built In Universal Power Supply 90-250V
50/60Hz DMX controlled.

CABLES

Mod. 5403.135 3 mt. (9.8 ft) detachable Blue
POWERCON power cable with bare ends.

DMX cable is not included, to be ordered
separately

MODEL	DESCRIPTION
F10VW320RF	RETROFIT KIT for De Sisti Tungsten Leonardo 2 kW - Tunable CCT - 2800K to 6600K

RETROFIT VW LED LEONARDO 2K

FEATURES

Power to LED	165W - flicker free
Rated Voltage & PFC	90-250V 50-60Hz PFC 0,96
Power consumption	200W @ 230V 200W @120V
Power Connection	powerCON IN & OUT
DMX Data link USITT DMX512-A	5-pin XLR for DMX in & out. Use shielded data cables. Do not overload the daisy chain. Up to a maximum of 32 devices can be used on a single DMX chain.
DMX Channels	3: Dimmer/Light Intensity, CCT Control, Mode of CCT Control (steps or continuous)
LED ARRAY Lifetime	50.000 hours with 80% Lumen Maintenance. The LED ARRAYS are tested and certified up to LM80
CCT	Tunable from 2.800°K to 6.600°K
CRI / TLCI	CRI>95 TLCI:96
Max. Housing Surface Temperature	70° C
Weight of Fixture	5,0 Kg (11.0 lb)
Suited for Lens diameter	250mm / 10"

FEATURES

Vari-White CCT technology with a range from 2.800°K to 6.600°K

CRI Greater than 95 at any CCT within the range

High efficiency Self Stabilizing Active Cooling: automatic, thermal stabilization of the LED operating temperature is managed by an internal thermal sensor and CPU, variable speed fan and heat sink to maintain the LED Array's constant temperature at a maximum of 65°C. The hydro dynamic bearing fan operates silently with a very low RPM.

Special Patented Optics for LED Technology.

Helix Screw driven focus mechanism which guides Teflon bushings supported LED ENGINE along 2 rods. This ensures smooth operation during focusing in any tilting position of the fixture. The Teflon bushings also provide a wiping action, which cleans the steel guide rails during focus.

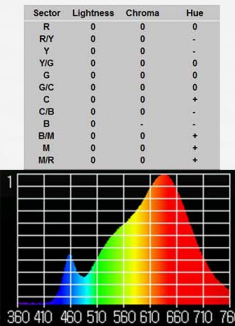
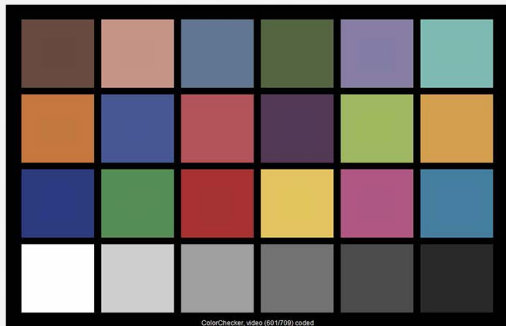
RETROFIT VW LED LEONARDO 2K

TLCI

@2800K CCT

DS VW LED RETROFIT KIT for LEONARDO 2kW - 165W - @2800°K : CCT = P2791 (+0.3)
TLCI-2012: 96 (P2791)

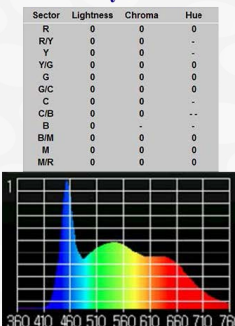
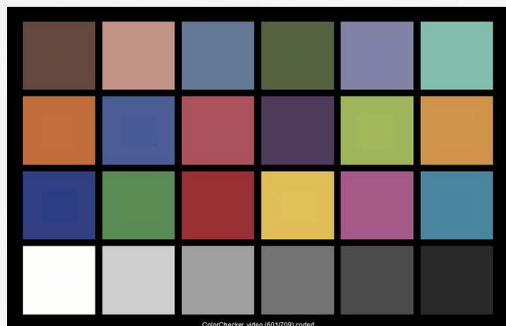
Television Lighting Consistency Index-2012



@6500K CCT

DS VW LED RETROFIT KIT for LEONARDO 2kW - 165W - @6600°K : CCT = D6990 (+0.4)
TLCI-2012: 96 (D6990)

Television Lighting Consistency Index-2012



PHOTOMETRICS

// Vari-White LED RETROFIT KIT FOR DS TUNGSTEN FRESNEL LEONARDO 2kW

Central Light intensity (Candle Power)

Illumination center values at Distances

FULL FLOOD - C.C.T. tunable from 2.800°K to 6.600°K - 165W (CRI >95) - TLCI: 96

FLOOD @ 2.800°K CCT	10.886 cd	1.210 lux <i>112 FC</i>	435 lux <i>40 FC</i>	109 lux <i>10 FC</i>
---------------------	-----------	----------------------------	-------------------------	-------------------------

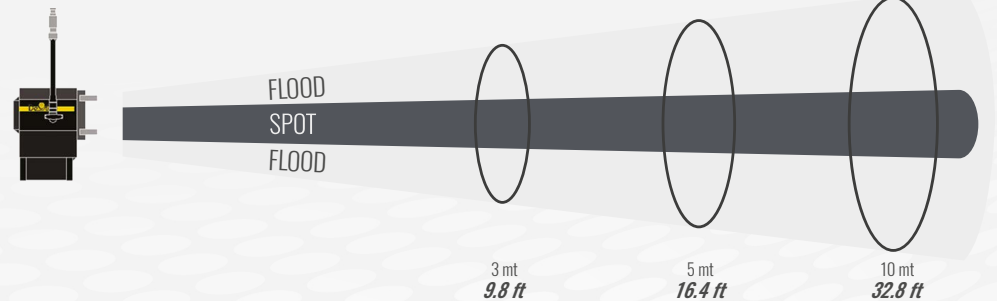
FLOOD @ 6.600°K CCT	14.535 cd	1.615 lux <i>150 FC</i>	581 lux <i>54 FC</i>	145 lux <i>14 FC</i>
---------------------	-----------	----------------------------	-------------------------	-------------------------

FULL SPOT - C.C.T. tunable from 2.800°K to 6.600°K - 165W (CRI >95) - TLCI: 96

SPOT @ 2.800°K CCT	117.045 cd	13.005 lux <i>1,208 FC</i>	4.682 lux <i>435 FC</i>	1.170 lux <i>109 FC</i>
--------------------	------------	-------------------------------	----------------------------	----------------------------

SPOT @ 6.600°K CCT	151.470 cd	16.830 lux <i>1,564 FC</i>	6.059 lux <i>563 FC</i>	1.515 lux <i>141 FC</i>
--------------------	------------	-------------------------------	----------------------------	----------------------------

3 mt *9.8 ft* 5 mt *16.4 ft* 10 mt *32.8 ft*



Light beam diameter with Beam Angle (50% of center value)

FLOOD	53°	2,99 mt <i>9.8 ft</i>	4,99 mt <i>16.4 ft</i>	9,97 mt <i>32.7 ft</i>
-------	-----	--------------------------	---------------------------	---------------------------

SPOT	11°	0,58 mt <i>1.9 ft</i>	0,96 mt <i>3.2 ft</i>	1,93 mt <i>6.3 ft</i>
------	-----	--------------------------	--------------------------	--------------------------

Light beam diameter with Field Angle (10% of center value)

FLOOD	77°	4,77 mt <i>15.7 ft</i>	7,95 mt <i>26.1 ft</i>	15,91 mt <i>52.2 ft</i>
-------	-----	---------------------------	---------------------------	----------------------------

SPOT	19°	1,00 mt <i>3.3 ft</i>	1,67 mt <i>5.5 ft</i>	3,35 mt <i>11.0 ft</i>
------	-----	--------------------------	--------------------------	---------------------------

LUX AT ANY DISTANCE = Candle Power: [Distance(in m.)]²

FC. AT ANY DISTANCE = Candle Power: [Distance(in ft)]²

The company reserves the right to alter the declared data without prior notice

