

RETROFIT **LED** DE LUX



DATASHEET

rel. 11-2023

DeSisti

RETROFIT LED DE LUX

LED RETROFIT KIT 80W - CRI>95 for De Sisti Fluorescent DE LUX 2 & DE 4

White light, Daylight balanced CCT

OVERVIEW

The LED Retrofit Kit for the De Sisti Delux transforms your compact fluorescent into a high efficiency LED light using the innovative De Sisti PCB LED array, in combination with the De Sisti optical system for LED Delux and with an enhanced CRI (Color Rendering Index) greater than 95 for appropriate chromacity performances. The basic kit utilizes the same controls as your existing Delux Fluorescent and will remain the same as an LED. A DMX upgrade kit is also available for On/Off, Analog (Manual Dimming), and Phase Dimmable.

Phase Dimmable will require the DMX upgrade to operate.

The Lighting Fixture is DMX Controlled from 0 to 100% with a negligible variation of Color Temperature while controlling the Light intensity.

The KIT is available in Daylight (5600°K) or Tungsten (3200°K) Balanced CCT (Correlated Color Temperature), with a CRI higher than 95.

The lighting performances of the retrofit kit are 17% higher than the Delux with biax compact fluorescent lamps.

One kit converts the model Delux 2, while to convert the model Delux 4 you will simply need to use 2 retrofit kits.



WHAT'S INSIDE

FIXTURE ENGINE

80W high power CRI>95

Built In Universal Power Supply 90-250V
50/60Hz DMX controlled.

CABLES

Mod. 5403.135 3 mt. (9.8 ft) detachable Blue
POWERCON power cable with bare ends.

DMX cable is not included, to be ordered
separately

MODEL	DESCRIPTION
LED RF D	RETROFIT KIT for De Sisti DE LUX - Daylight CCT



RETROFIT LED DE LUX

FEATURES

Power to LED	80W - DC current to the LED - flicker free
Rated Voltage & PFC	90-250V 50-60Hz PFC 0,96
Power consumption	100W @ 230V 100W @120V
Power Connection	powerCON IN & OUT
DMX Data link USITT DMX512-A	5-pin XLR for DMX in & out. Use shielded data cables. Do not overload the daisy chain. Up to a maximum of 32 devices can be used on a single DMX chain.
DMX Channels	1 @ 8bit 2 @ 16bit
LED ARRAY Lifetime	55.000 hours with 90% Lumen Maintenance. The LED ARRAYS are tested and certified up to LM80
CCT	D: 5.600°K
CRI / TLCI	D: >95 / >94
Max. Housing Surface Temperature	70° C
Weight of Fixture	1,8 Kg (3.96 lb)

FEATURES

Fast conversion to LED of an existing DE LUX with FLUORESCENT lamps. One module allows to convert DE LUX 2, 2 modules allow to convert DE LUX 4.

Light output increased of approx 17% compared to a DE LUX with Fluorescent lamps.

Special optic designed for LED Technology.



RETROFIT LED DE LUX

PHOTOMETRICS

// RETROFIT LED DE LUX

One module allows to convert to LED the model DE LUX 2
Two modules allow to convert to LED the model DE LUX 4

5.600°K DAYLIGHT BALANCED C.C.T. (Correlated Color Temperature) - 80W (CRI>95) - TLCI: >94

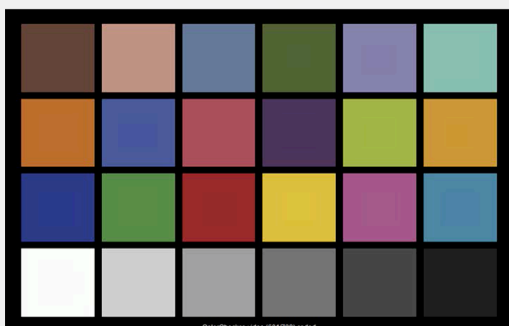
FLOOD	3.573 cd	893 lux <i>83 FC</i>	397 lux <i>37 FC</i>	143 lux <i>13 FC</i>
-------	----------	-------------------------	-------------------------	-------------------------

TLCI

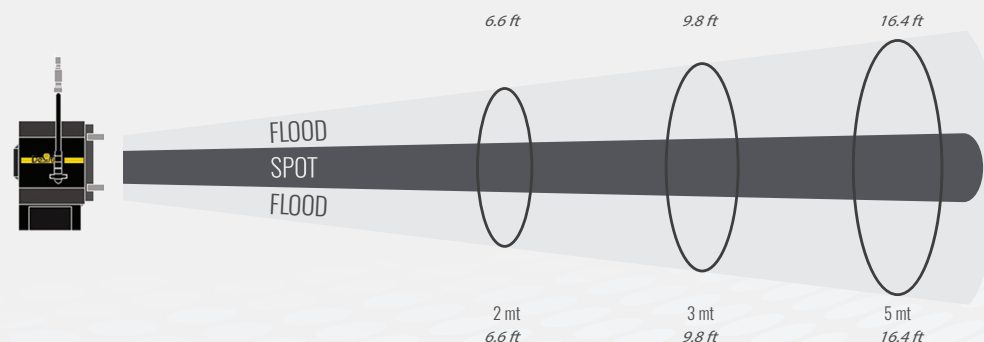
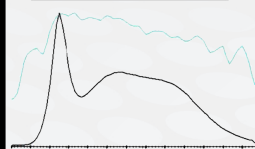
DAYLIGHT CCT

De Sisti LED RETROFIT KIT for LEONARDO 2 kW - 165W - Daylight : CCT = D5850 (+1.2)
 TLCI-2012: 97 (05850)

Television Lighting
 Consistency Index-2012



Sector	Lightness	Chroma	Hue
R	0	0	0
RY	0	0	--
Y	0	-	-
Y/G	0	0	0
G	0	0	0
G/C	0	0	0
C	+	0	-
C/B	+	0	---
B	0	-	-
BM	0	0	+
M	0	0	+
MR	+	0	0



Light beam diameter with Beam Angle
 (50% of center value)

Beam Sizes

HORIZONTAL	108°	5,51 mt <i>18.1 ft</i>	8,26 mt <i>27.1 ft</i>	13,76 mt <i>45.2 ft</i>
VERTICAL	73°	2,96 mt <i>9.7 ft</i>	4,44 mt <i>14.6 ft</i>	7,40 mt <i>24.3 ft</i>

Light beam diameter with Field Angle
 (10% of center value)

HORIZONTAL	152°	16,04 mt <i>52.6 ft</i>	24,06 mt <i>79.0 ft</i>	40,11 mt <i>131.6 ft</i>
VERTICAL	126°	7,85 mt <i>25.8 ft</i>	11,78 mt <i>38.6 ft</i>	19,63 mt <i>64.4 ft</i>

LUX AT ANY DISTANCE = Candle Power: [Distance(in m)]²

EG. AT ANY DISTANCE = Candle Power: [Distance(in ft)]²